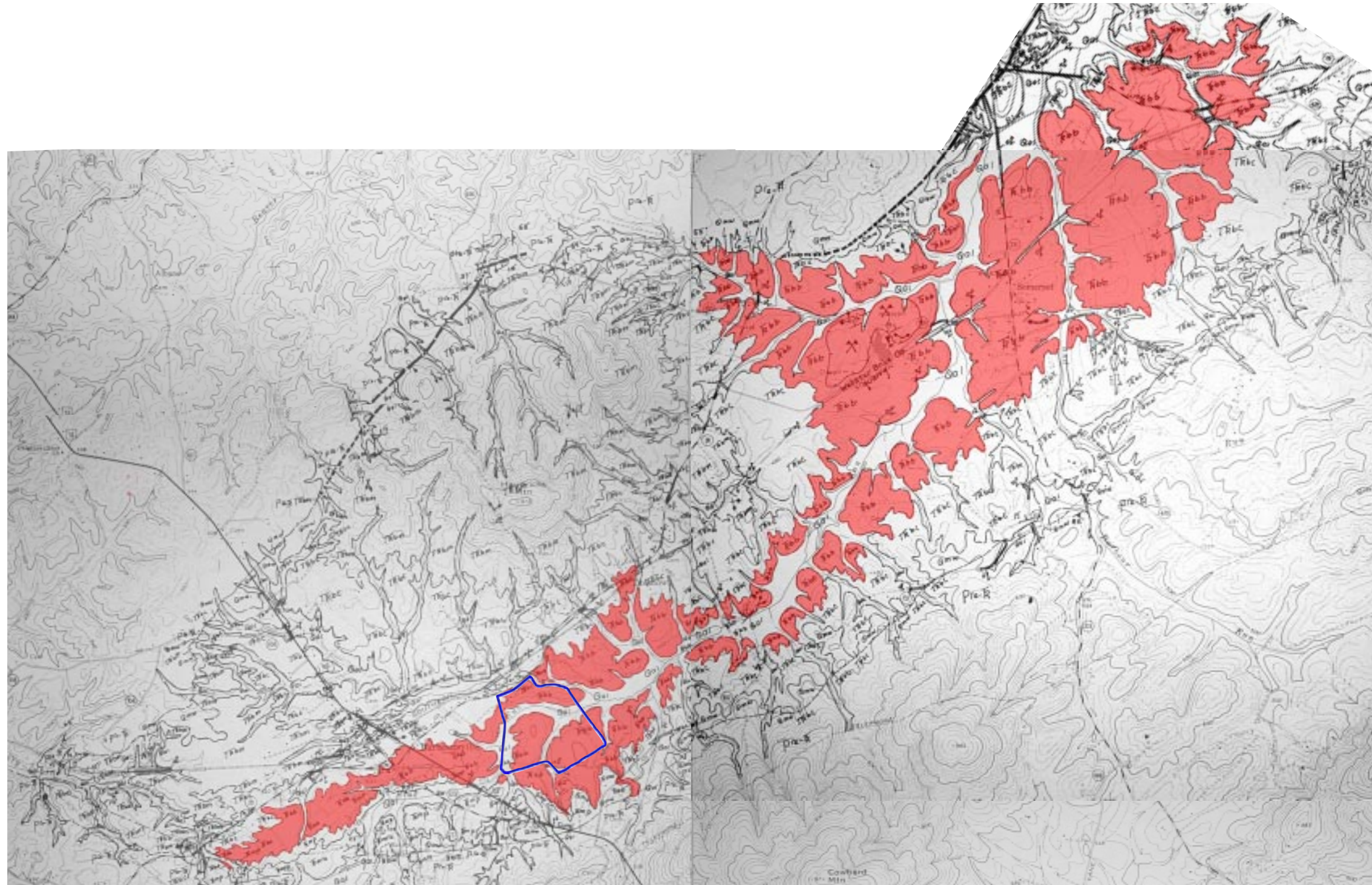


Balls Bluff Formation Occurrence in the Barboursville Basin



The material General Shale LLC wants to excavate for making bricks is associated with the Balls Bluff Formation, which occurs in the Barboursville Basin, a Triassic-Jurassic sedimentary basin. The red shading shows the extent of the Balls Bluff Formation in the Barboursville Basin. The approximate boundaries of the property General Shale LLC is seeking to buy from the Darnells are shown in blue. You can see that the Balls Bluff is clearly not limited to the Darnell property General Shale LLC proposes to mine.